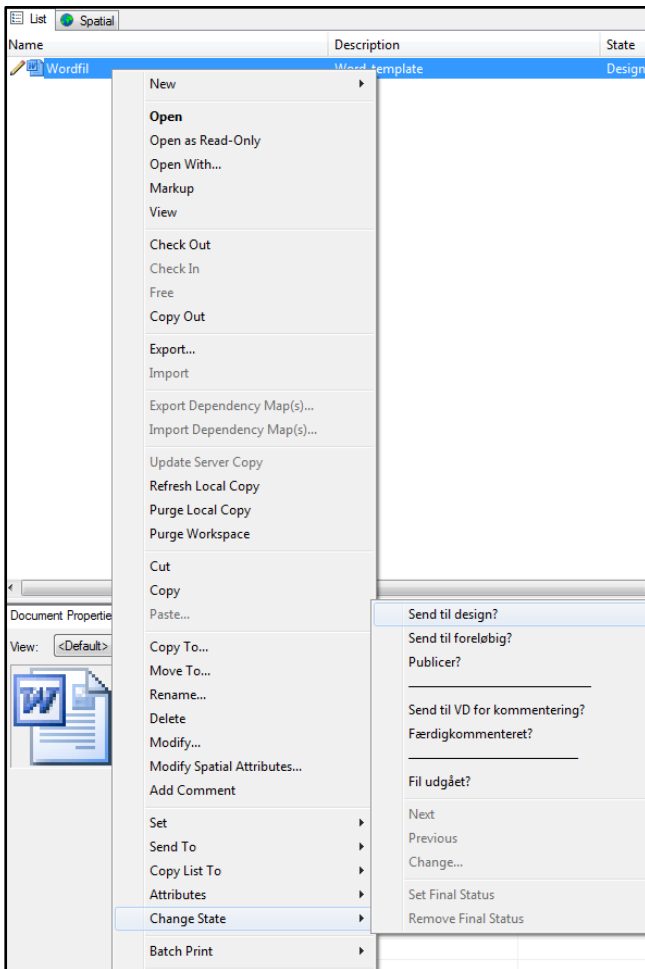




## PDF drawing – Revision

### Revision of PDF drawing in ProjectWise

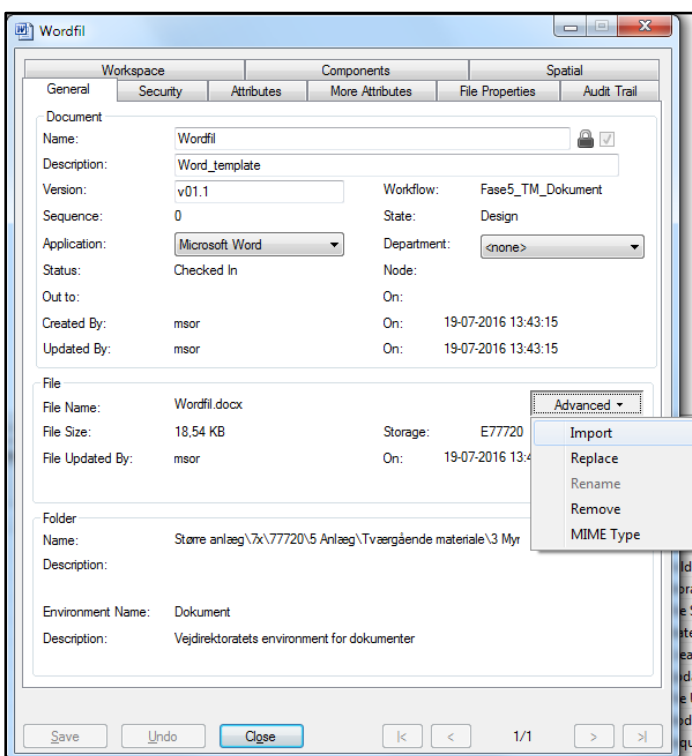
When a PDF drawing has to be revised, it shall be sent from the 'Published' state to the 'Design' state.



If the PDF drawing is not at the Design state, right-click on the PDF drawing and select 'Change State'.

Now select 'Send til design?' (Send to design?).

The PDF drawing should now be at the design state, ready for new revision.



Right-click on the PDF drawing and select 'Properties'.

Make sure that you are at the 'General' tab.

Click on the button 'Advanced' and select 'Import'.

Now browse to the new revision of the PDF drawing and click 'Åben' (Open).

Click 'Save' and then 'Close'.

Remember to fill in the attributes for the updated PDF drawing and send it to the next state.

#### DISCLAIMER

The translation into English of Quality Management Systems is to be regarded entirely as a service. In the event of any discrepancy or shortcomings in the translation, the Danish version will prevail. At any time the Danish versions of Quality Management Systems are those in force.