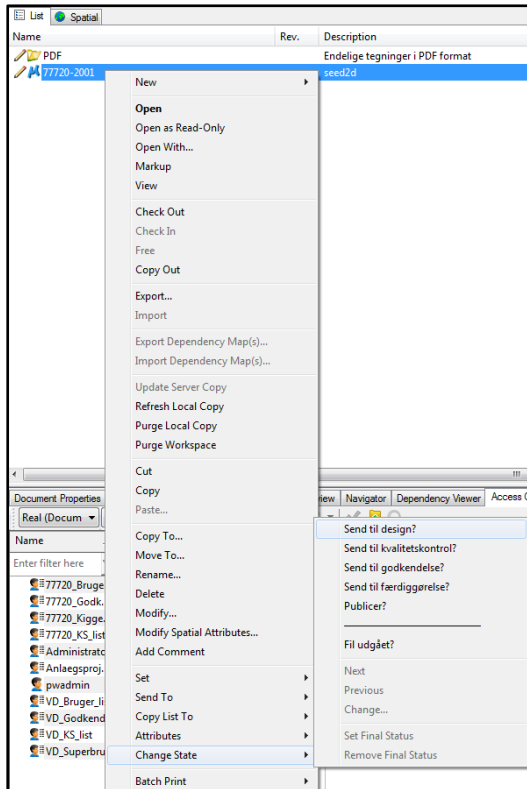


Drawing – Revision

Revision of drawing in ProjectWise

When a drawing has to be revised, it shall be sent from the 'Published' state to the *Design* state.

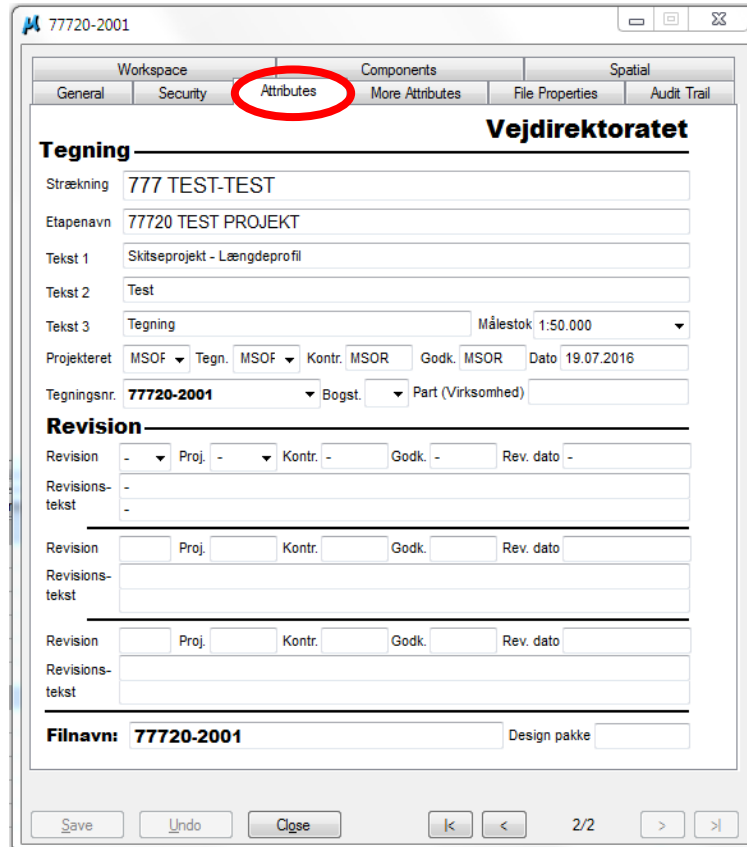


Right-click on the drawing and select 'Change State'.

Now select 'Send til design?' (*Send to design?*).

The drawing should now be at the design state, ready for revision.

Attributes for drawing:



Right-click on the drawing and select 'Properties'.

Select the 'Attributes' tab to fill in the following relevant attributes:

- **Revision:** To be completed with a letter when a revision is to be made of the drawing. Shall be filled in at the 'Design' state.

- **Revisionstekst (Revision text):** Write why a new revision of the drawing has been created. Shall be filled in when the file is at the 'Design' state.

- **Proj. (Desig.):** Fill in who has designed the content of the drawing revision. Shall be filled in at the 'Design' state.

- **Kontr. (Contr.):** Fill in who has performed control of the drawing. Is automatically filled in when the drawing is sent from the 'Quality Control' (KS) state to another state.

- **Godk. (Appr.):** Fill in who has performed control of the drawing. Is automatically filled in when the drawing is sent from the 'Approval' state to the 'Published' state.

DISCLAIMER

The translation into English of Quality Management Systems is to be regarded entirely as a service. In the event of any discrepancy or shortcomings in the translation, the Danish version will prevail. At any time the Danish versions of Quality Management Systems are those in force.